

TYPICAL APPLICATIONS OF TRAFFIC CONTROL DEVICES FOR SINGLE LANE TWO-WAY TRAFFIC WITH FLAGGER

GENERAL NOTES

- ① Spacing of drums at this location shall be 10 ft for a 50 ft taper or 20 ft for a 100 ft taper.
- 2. See Standard Drawing E 801-TCLG-01 for standard notes and legend.
- ③ Longitudinal buffer length. See Standard Drawing E 801-TCFO-03 for table this dimension.

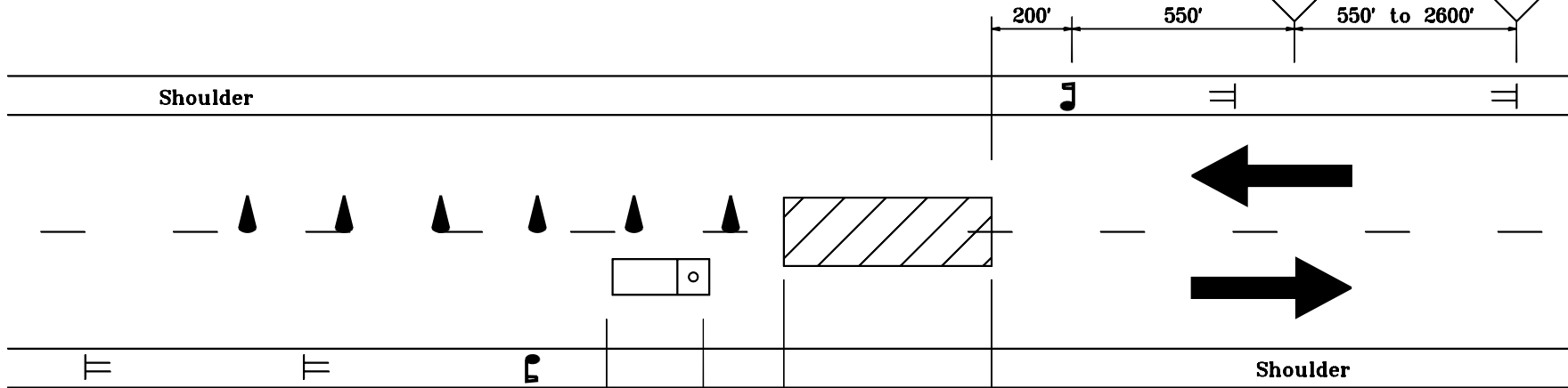
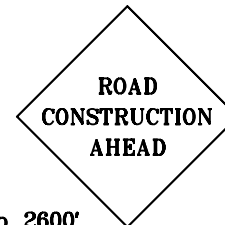
XG20-2
END CONSTRUCTION

INDIANA DEPARTMENT OF TRANSPORTATION	
FLAGGER OPERATIONS	
SEPTEMBER 1997	
STANDARD DRAWING NO. E 801-TCFO-01	
DETAILS PLACED IN THIS FORMAT 11-15-99	
	/s/ Anthony L. Uremovich 11-15-99 DESIGN STANDARDS ENGINEER DATE
	/s/ Firooz Zandi 11-15-99 CHIEF HIGHWAY ENGINEER DATE
	DESIGN STANDARDS ENGINEER ORIGINALLY APPROVED 9-01-97



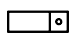
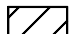
2 LANE 2 WAY HIGHWAY

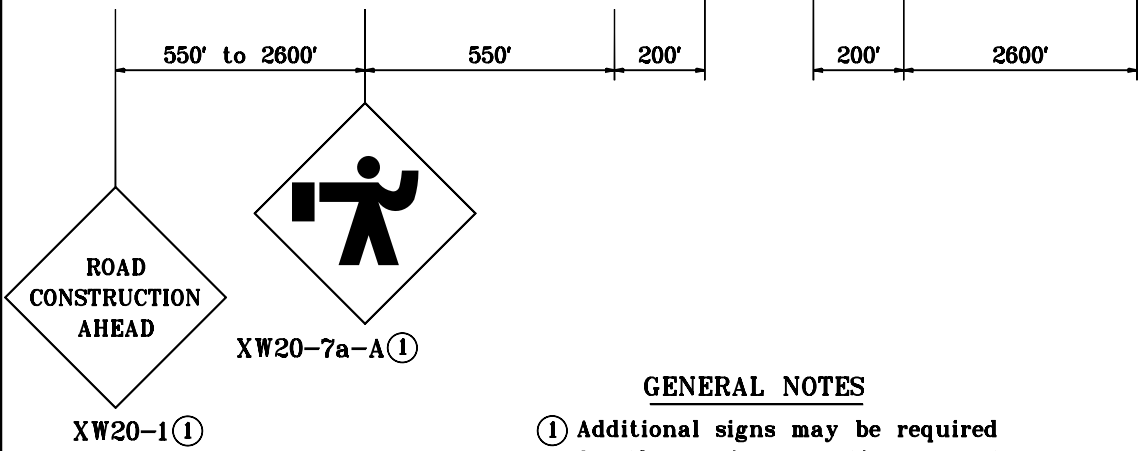
XW20-7a-A ①

XW20-1 ①



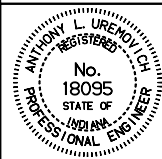
LEGEND

-  Flagger
-  Cone
-  Truck with Strobe Flashing Light
-  Work zone



GENERAL NOTES

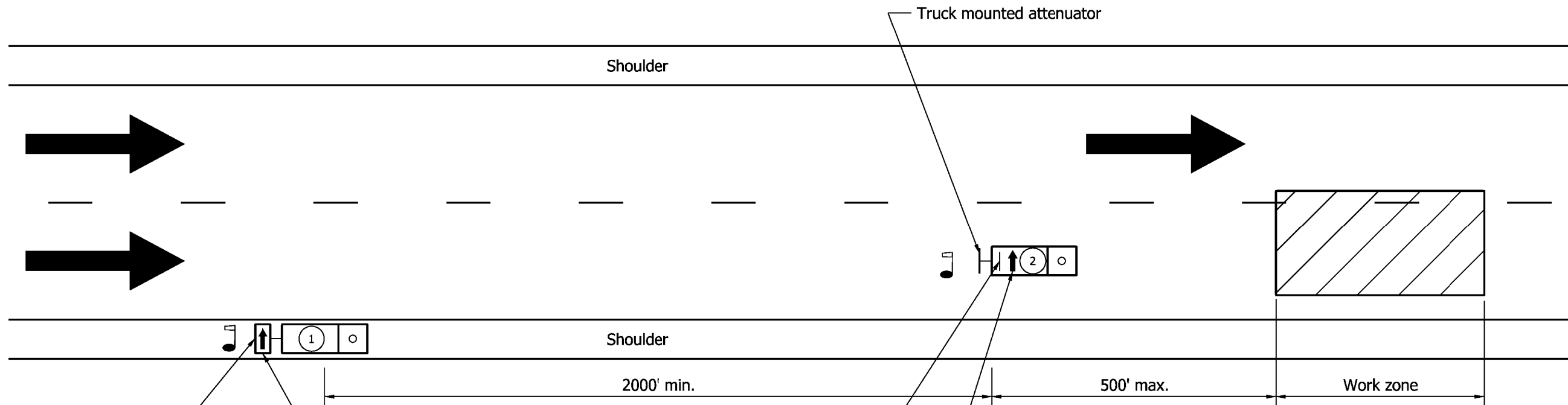
① Additional signs may be required for the moving operation so as to maintain proper sign spacing.

INDIANA DEPARTMENT OF TRANSPORTATION	
MAINTENANCE OF TRAFFIC FOR MOVING OPERATION	
MAY 2000	
STANDARD DRAWING NO. E 801-TCFO-02	
	/s/ Anthony L. Uremovich 5-01-00 DESIGN STANDARDS ENGINEER DATE
	/s/ Firooz Zandi 5-01-00 CHIEF HIGHWAY ENGINEER DATE

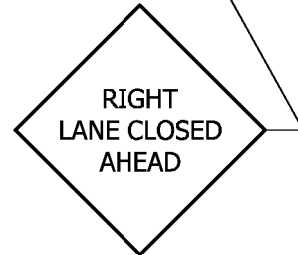
XW20-1 ①

XW20-7a-A ①

MULTI-LANE DIVIDED HIGHWAY



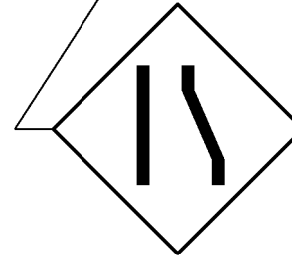
Truck mounted flashing arrow sign



XW20-5
(R or L)
Mounted to bottom
of flashing arrow sign

LEGEND

- Flagger
- Truck which may be a pick-up
- Truck which shall be 24,000 lb or greater gross vehicular weight



XWA-2
(R or L)
Mounted on rear
of truck

2'-6 x 4'-0 roof mounted flashing arrow sign

GENERAL NOTES

1. Flagger shall be used while trucks are stopped.
2. Strobe lights will be require on all vehicles.
3. Distances shown are approximate and may be adjusted as directed.
4. Truck mounted attenuator shall be designed to attenuator impacts by a pickup truck of 4400 lbs. gross vehicular weight at 60 mph.

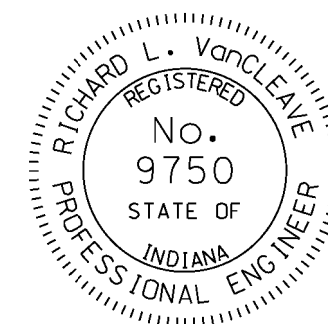
LONGITUDINAL BUFFER LENGTH SHOWN ON STANDARD DRAWING E 801-TCFO-01

Posted Speed Limit, mph	Length, ft
30 or lower	80
35	115
40	180
45	230
50	280
55	350
60	410
65	500

INDIANA DEPARTMENT OF TRANSPORTATION
MAINTENANCE OF TRAFFIC FOR
REFLECTOR REPLACEMENT

SEPTEMBER 2009

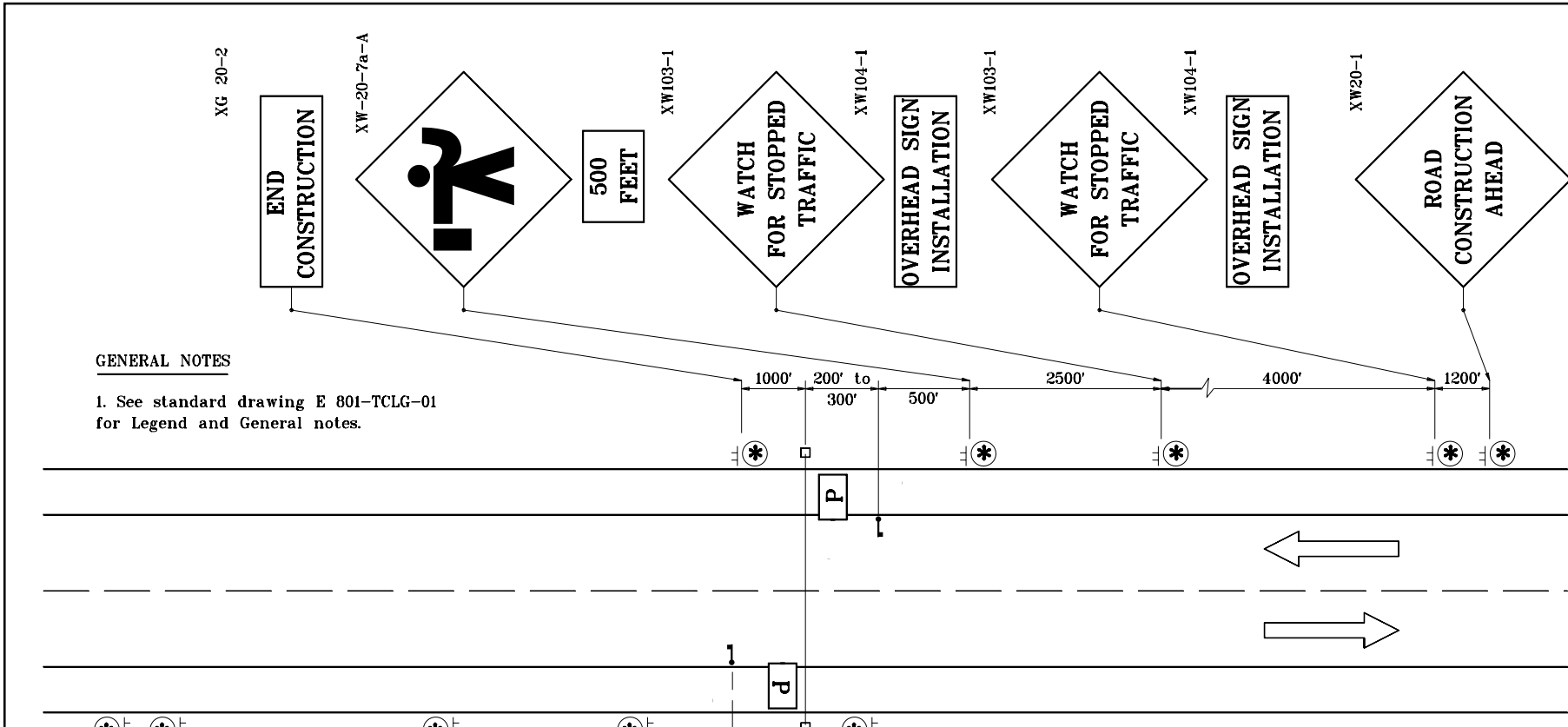
STANDARD DRAWING NO. E 801-TCFO-03



DESIGN STANDARDS ENGINEER

/s/ Richard L. VanCleave 09/01/09
DESIGN STANDARDS ENGINEER DATE

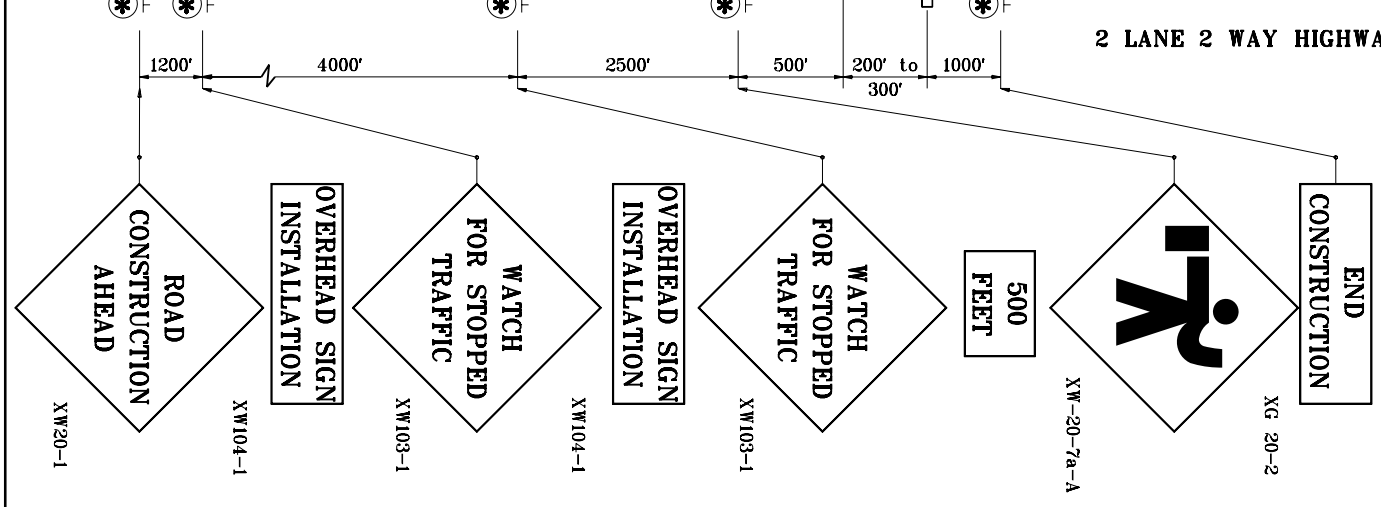
/s/ Mark A. Miller 09/01/09
CHIEF HIGHWAY ENGINEER DATE



GENERAL NOTES

1. See standard drawing E 801-TCLG-01 for Legend and General notes.

2 LANE 2 WAY HIGHWAY

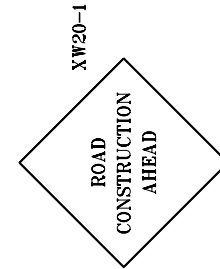
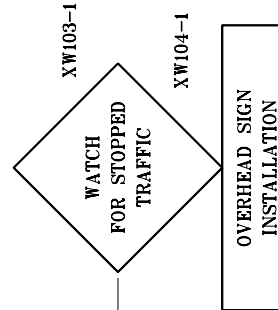
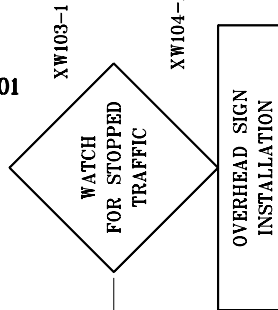


INDIANA DEPARTMENT OF TRANSPORTATION	
TRAFFIC CONTROL FOR OVERHEAD SIGN INSTALLATION	
SEPTEMBER 1997	
STANDARD DRAWING NO. E 801-TCF0-04	
	DETAILS PLACED IN THIS FORMAT 11-15-99 /s/ Anthony L. Uremovich 11-15-99 DESIGN STANDARDS ENGINEER DATE
DESIGN STANDARDS ENGINEER	/s/ Firooz Zandi 11-15-99 CHIEF HIGHWAY ENGINEER DATE ORIGINALLY APPROVED 9-01-97

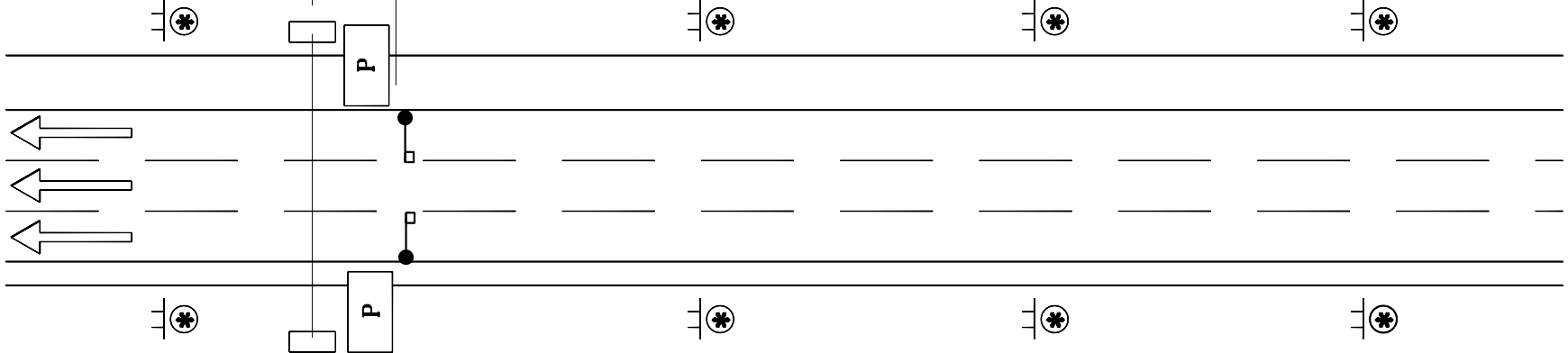
GENERAL NOTES

1. See standard drawing E 801-TCLG-01 for legend and General notes.

END
CONSTRUCTION
XG20-2



500' 200' to 300' 1/2 mi 1/2 mi 1/2 mi

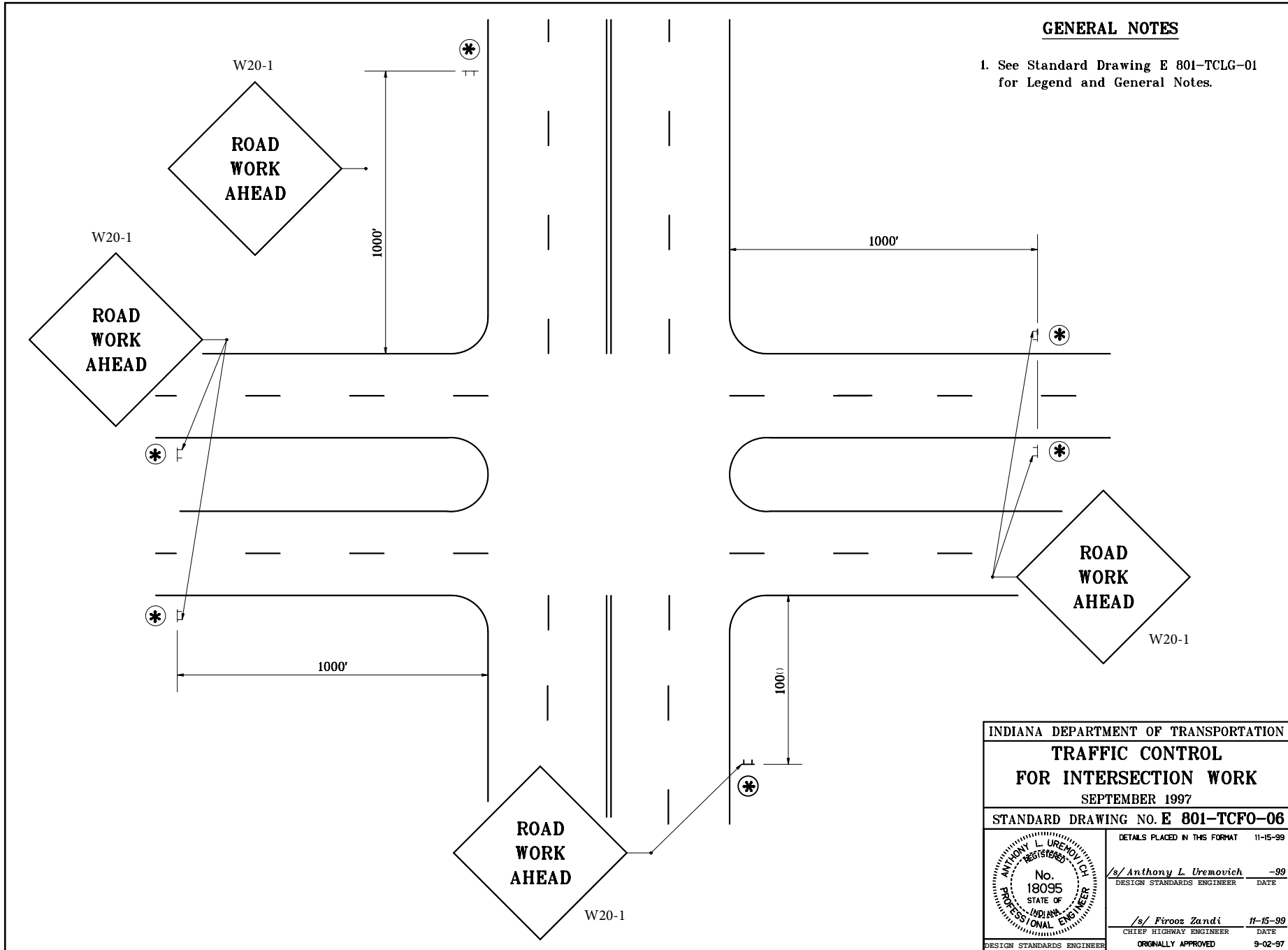


MULTI-LANE DIVIDED HIGHWAY

INDIANA DEPARTMENT OF TRANSPORTATION	
TRAFFIC CONTROL FOR OVERHEAD INSTALLATION	
SEPTEMBER 1997	
STANDARD DRAWING NO. E 801-TCFO-05	
	DETAILS PLACED IN THIS FORMAT 11-15-99
	/s/ Anthony L. Uremovich 11-15-99 DESIGN STANDARDS ENGINEER DATE
	/s/ Firooz Zandi 11-15-99 CHIEF HIGHWAY ENGINEER DATE
DESIGN STANDARDS ENGINEER	ORIGINALLY APPROVED 9-01-97

GENERAL NOTES

1. See Standard Drawing E 801-TCLG-01 for Legend and General Notes.



INDIANA DEPARTMENT OF TRANSPORTATION	
TRAFFIC CONTROL FOR INTERSECTION WORK	
SEPTEMBER 1997	
STANDARD DRAWING NO. E 801-TCFO-06	
DETAILS PLACED IN THIS FORMAT 11-15-99	
	/s/ Anthony L. Uremovich -99 DESIGN STANDARDS ENGINEER DATE
	/s/ Firooz Zandi 11-15-99 CHIEF HIGHWAY ENGINEER DATE
	ORIGINALLY APPROVED 9-02-97